

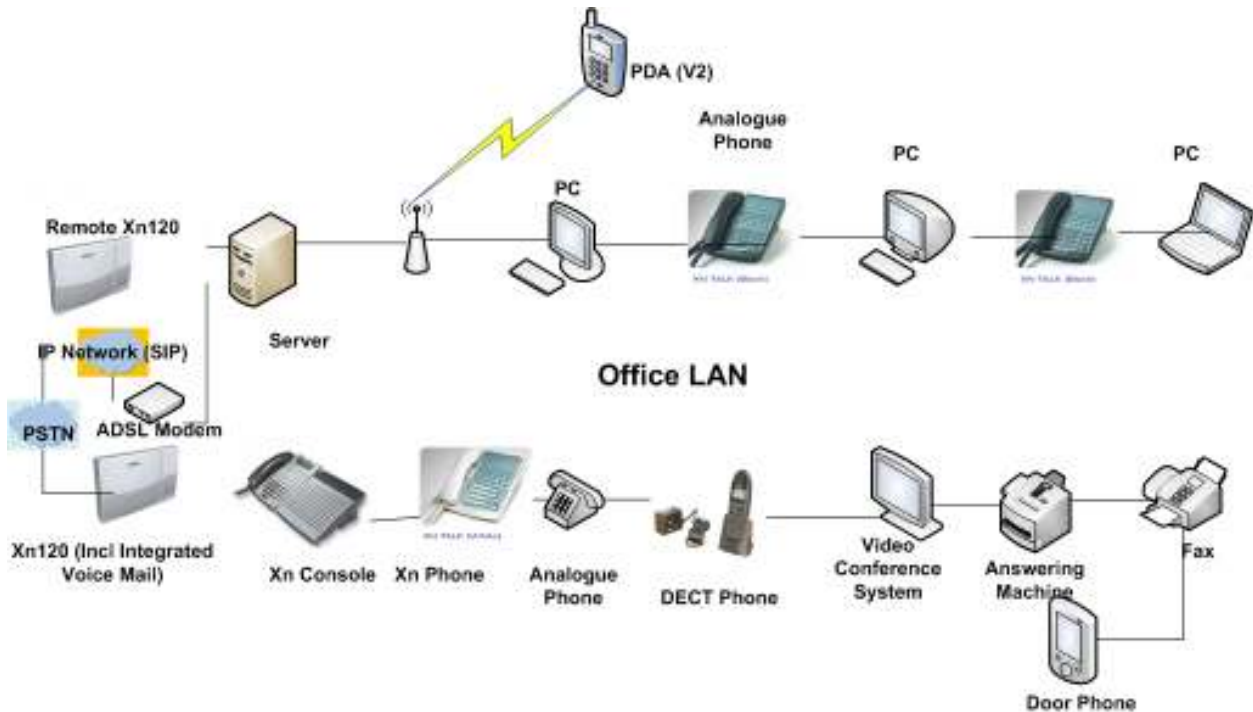
## **PABX Brochure SMME**

BTC has Hybrid IP PABX systems for small Medium Business enterprises which are scalable from 3 Lines/8 Extensions to 27 lines/72 Extensions. These are competitive PABX brands which offer efficient, flexible and manageable service. NEC Xn 120 as it is popularly known has been on Botswana market for the past five years. It can support 24 IP Licenses; we also offer Call Management and a five year maintenance plan. For more information or pricing please contact the following number 3958000 or e-mail address [sales@btc.bw](mailto:sales@btc.bw).

### **Features include but are not limited to the following:**

- Abbreviated Dialing
- Last 10-number Redial
- CTI (Computer Telephony) use your mouse for point and click dialing from your PC.
- Call Centre features give you 'large corporate' benefits at an SME price.
- Calling Number Display.
- Integrated Digital Voicemail has up to 15 hours of message time.
- Account Codes, Forced & Verifiable
- Automatic Call Distribution
- Automatic Route Selection

The Picture below shows NEC Xn120's IP networking Capability.



### PABX Brochure Large Corporate's

BTC has been a Mitel partner for more than 20 years, we supply and install Mitel 3300 IP Communications Platform (ICP), which provides feature-rich communications system designed to support businesses from 10-65,000 users. The 3300 ICP provides organizations with the opportunity to IP enable their legacy PABX's.

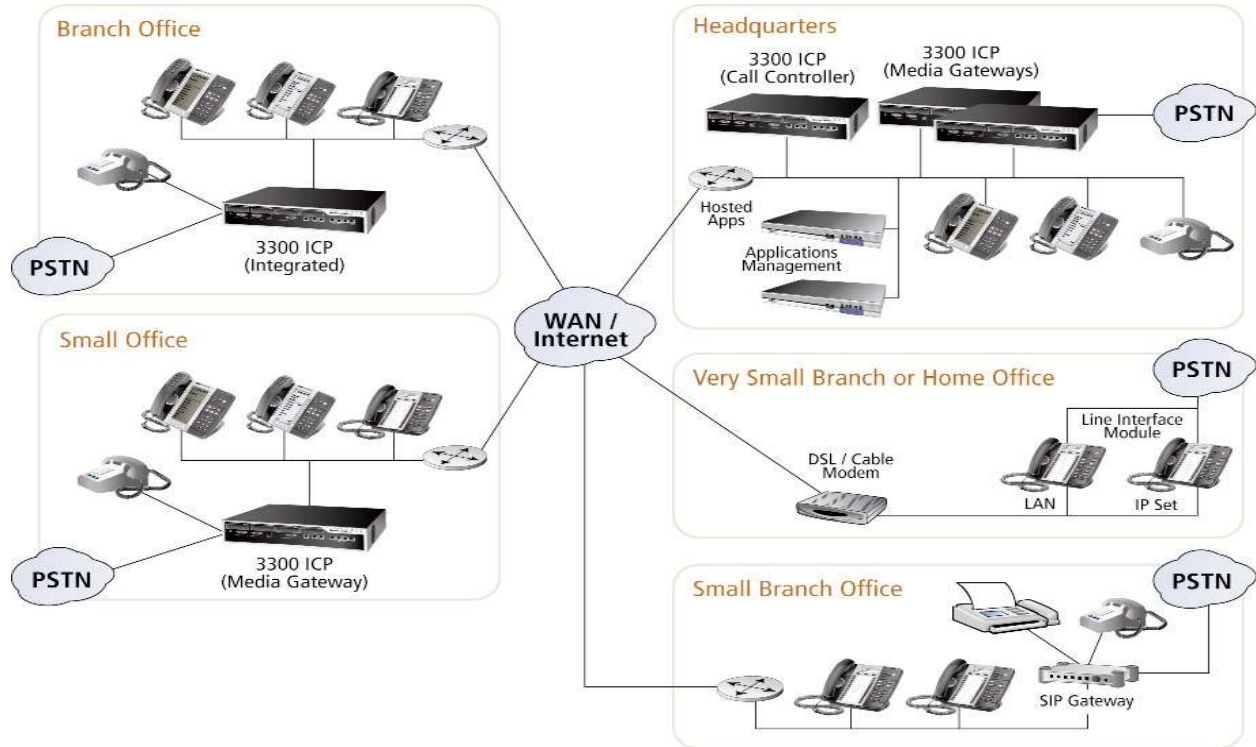
#### **Features include:**

- FMC
- VoIP
- Voice Mail
- Tele-presence
- Management System
- Wireless handsets (Wi-Fi or IP DECT)
- Full-duplex IP audio conference units.

**Mitel 3300 ICP provides:**

- Seamless IP networking across multiple sites
- The ability to cluster up to 999 controllers as a single system, to support over 65,000 IP ports
- Mitel's System Data Synchronization technology for sharing data among controllers, in order to enable feature transparency across a cluster of controllers
- Hardware redundancy and software resiliency delivering an incredibly robust solution
- Industry-standard SIP trunking and SIP line side support
- Support for industry-standard networking protocols such as Q.SIG and DPNSS
- 650+ telephony features
- Embedded Standard Unified Messaging, auto-attendant, ACD (Call Center Application), and Wi-Fi and IP DECT wireless
- Support for the broadest range of IP desktop devices within the industry today
- Web-based user interface that allows for easy programming of desktop phones
- Hot desking, allowing users to change any extension to their own
- 802.3af compliance for power over Ethernet
- Support for touch-of-a-button, drag-and-drop video and audio conferencing
- Tele worker, home or remote office extension and LAN through broadband.
- Web conferencing, parties calling to one number.
- Least Cost Routing- Choosing the cheapest route at a given time
- Automatic Route Selection- If you have multiple sites and all networked, a cheaper route will be selected when calling your any of your branches.
- IP Networking- Connecting of branches
- Voice Compression

**The Picture below shows 3300's Seamless IP networking Capability across multiple sites.**



For more information or pricing please contact the following number 3958000 or e-mail address [Sales@btc.bw](mailto:Sales@btc.bw)